



ANYSHOP e2

Reliable, Stylish, Economic, Smartly Designed POS System

The stylish designed ANYSHOP e2 is intuitively designed so that anyone can install or replace its optional peripheral devices easily. For example, all peripheral devices are toolless designed, simply turn a thumb screw by hand to install or remove with minimal effort. The ANYSHOP e2 also boasts the ability for easy filed servicing and upgrade due to its ground breaking modular design that allows hassle free RAID upgrade and adding additional

side USB ports a breeze. The ANYSHOP e2 is also ascetically pleasing due to multiple housing colors to choose from that will match just about any store's interior design. The ANYSHOP e2 POS system encompasses a user friendly advanced designed, extreme stability, and high performance with energy efficiency technology.



- Easy Installation and Maintenance
- Optional Color Case
- Optimized High Performance, Energy Efficient Processor
- Multiple I/O Ports
- Support Secondary HDD or SSD Drive.
- System Expandability
- Onboard UPS ("Smart Battery") Technology Guards Against Data Loss Due to Power Loss

Options



Color Case

- Monitor back case
- Terminal back case



Easy Installation

- Easy Maintenance
- Reduces product maintenance cost



Customer Display

- VFD type
- 20 columns x 2 lines

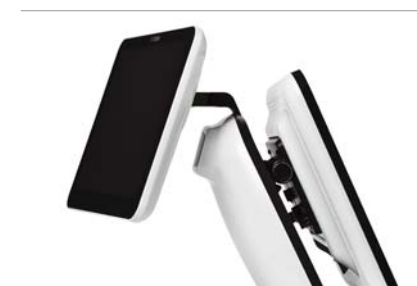


Magnetic Stripe Reader (MSR) Smart Card Reader (SCR)



2nd LCD Display

- 12.1", 10.4", 10.1" display
- 1024 x 768 resolution



Specifications



	ANYSHOP e2 Q SERIES	ANYSHOP e2 D25
CPU	uPGA988 for 3rd Generation Intel® Core™ i7/i5/i3 (Ivy Bridge), 2nd Generation Intel® Core™ (Sandy Bridge) - Intel® Core™ i7 3940XM Processor (8M Cache, up to 3.90 GHz)	Intel Atom processor D2550 (1MB Cache, 1.86 GHz, Dual Core for Cedarview-D)
Chipset	Intel QM77	Intel NM10
Storage	SATA 3 (6Gb/s) 2.5 inch SSD 64GB (Max. 2 Optional) Support Raid 0, 1 Support AHCI	SATA 2 (3Gb/s) 2.5 inch SSD 32GB (Max. 2 Optional) -
Memory	DDR3-1600MHz SODIMM Default 2GB (MAX. 8GB)	DDR3-1066MHz SODIMM 2GB (MAX. 4GB)
Graphic	Integrated Intel GFX	Integrated Intel GMA HD 3650
AMT	Support iAMT 8.0	-
Display		
Resolution	15" LED Backlight TFT-LCD 250 cd/m ² (1024 x 768 resolution)	
Touch screen	5-wired Resistive Touch (ELO Touch)	
Internal I/O		
USB	3 Ports (reserved for touch controller, SCR EMV card, camera and MSR controller)	
Serial port	COM 5 (reserved for cash drawer port) & COM 6 (reserved for MSR)	
Display port	LVDS or VGA & COM 4 (reserved for CDP)	VGA & COM 4 (reserved for CDP)
Extension slot	Mini PCIe	
Primary display	24bit LVDS	
External I/O		
USB	Rear 6 (USB 3.0 x 4 ports, USB 2.0 x 2 ports)	Rear 4 (USB 2.0 x 4 ports)
PS/2	1 Port (reserved for Keyboard & Mouse)	
Serial port	COM 1 ~ 3 with 5V/12V power output on 9pin	
LAN	Gigabit Ethernet x 2 ports 1x Intel Gigabit LAN with iAMT 8.0 (Intel 82579LM) 1x Intel Gigabit LAN with (Intel 82583V)	Realtek RTL 8111E Ethernet Controller
Audio	Realtek ALC 892 / Line-out, Mic-in	
Display port	VGA x 1 port	
Options		
MSR	Comply with ISO 7811, Support 1 & 2 & 3 track	
Speaker	2 x 0.8W (Stereo)	
Side USB	4 Ports (USB 2.0 x 4 ports)	
SCR	EMV level 1	
Dallas	Dallas I-button reader	
Back up battery	Smart battery (supports up to 1 packs)	
Customer display	VFD type (20 x 2)	
2nd LCD	10.1" LCD or 10.4" LCD or 12.1" LCD (1024 x 768 resolution)	
2nd Storage	2nd 2.5 inch HDD / SSD storage	
Cash drawer port	1 Port	
Parallel port	1 Port	
WiFi	Mini PCIe for wireless LAN	
Operating Temperature	0°C ~ 40°C at 10% ~ 80% humidity	
Storage Temperature	-20°C ~ 60°C at 10% ~ 80% humidity	
Qualification	CE, FCC, KC	
Power	Adaptor 24V, 6A	Adaptor 12V, 5A
OS Support	Windows 7, Windows 8, POS Ready 7	Windows XP/Vista, Windows 7, POS Ready 2009/7
Dimension (WxHxD)	365 x 305 x 385(mm), 14.3 x 12 x 15.1(inch)	

* Product specifications may differ according to region and may be changed without prior notice.